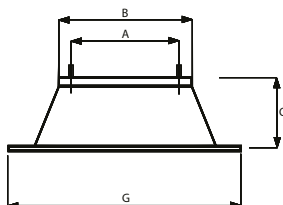
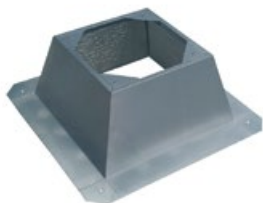


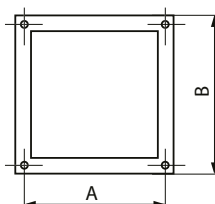
DOS Metal G – mounting base



- mounting base for the fan made of galvanized sheet with internal insulation that prevents the formation of condensate. Very simple installation on flat roofs.

Type	A	B	C	G
DOS 245	245	289	285	622
DOS 330	330	419	285	752
DOS 450	450	544	285	877
DOS 535	535	614	285	947
DOS 590	590	694	285	1,027
DOS 750	750	884	285	1,217

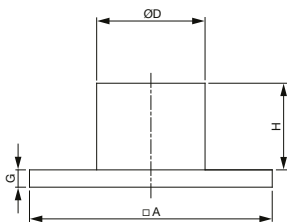
PV – rubber seal



- used as a seal between the fan and the DOS base
- made of 5 mm thick neoprene rubber

Type	A	B
PV 245	245	290
PV 330	330	425
PV 450	450	550
PV 535	535	634
PV 590	590	700
PV 750	750	905

JPA-CTB – mounting adapter



- mounting adapter with connecting pipe
- for CTB fans
- suitable in combination with mounting bases type JBS, JBS-S, JAA or JAAL
- material galvanized sheet

Type	A [mm]	D [mm]	H [mm]	G [mm]
JPA-CTB 435/160	435	160	200	40
JPA-CTB 435/200	435	200	200	40
JPA-CTB 560/250	560	250	200	40
JPA-CTB 560/315	560	315	200	40