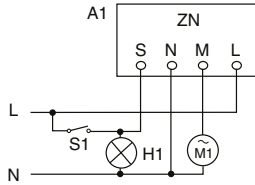
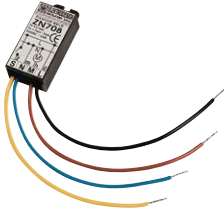


ZN 708, 715, 707+ – timer switch

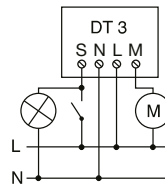


- fixed time
 - it is built in a plastic case that can be placed under the switch
 - rated voltage 230 V/50 Hz
 - max. current 0.8 A inductive
 - ambient temperature 0–50 °C
 - delay interval 708 – 8±1 minutes
 - delay interval 715 – 15±1 minute
 - delay interval 707+ – 7+1 minutes
 - protection IP20
 - dimensions 20 × 40 × 13 mm (W × H × D)
- ZN 708 is suitable for WC.
ZN 715 is suitable for bathrooms.

DT 3 – adjustable timing switch



DT 3 after removing the cover

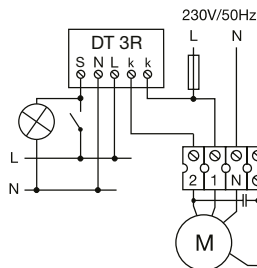


- adjustable 2–20 minutes
- rated voltage 230 V/50 Hz
- max. current 1 A
- use for delayed switching off of fans in social facilities
- for delayed switching off of fans working in conjunction with electric heaters
- for delayed switching on of electric heating rods heaters, etc.
- it is built in a plastic housing that can be placed under the switch or with two screws on the wall
- LED indicates the switched state
- dimensions 47 × 42 × 22 mm (W × H × D)

DT 3R – reduced/permanent ventilation switch



DT 3R after removing the cover

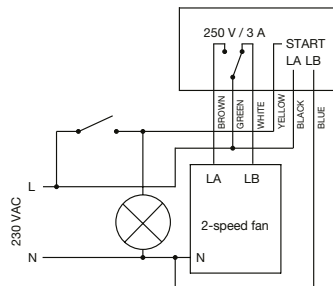


- switch for reduced and continuous ventilation for SILENT ECO-U, ECO-A fans
- In basic mode, the fan operates at low speed and provides basic continuous ventilation
- adjustable switchover time to higher fan speed 2–20 minutes
- optimization of ventilation of living spaces or apartment complexes
- rated voltage 230 V/50 Hz
- max. current 1 A
- plastic housing can be placed under the switch or with two screws on the wall
- LED indicates switched on status
- dimensions 47 × 42 × 22 mm (W × H × D)

DT 3-PR – adjustable time switch with switching relay



DT 3-PR after removing the cover



- designed for speed switching of two-speed axial or radial fans
- the fan ventilates permanently at low speed, when the switch or light source is switched on, the switching relay switches the fan to higher speed for a set period of time for shock ventilation
- adjustable switching time 2–20 minutes
- rated voltage 230 V/50 Hz
- max. current 3 A
- protection IP20
- is built in a plastic housing that can be placed under the switch or with two screws on the wall
- LED indicates switched status
- dimensions 47 × 42 × 22 mm (W × H × D)