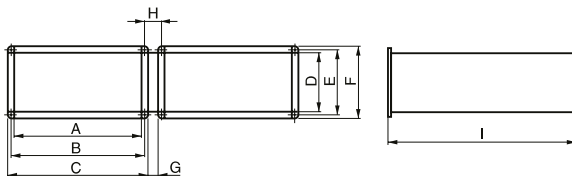
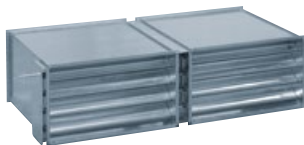


Mixing chambers

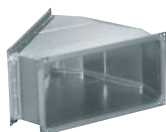
IMK mixing chamber



The chamber is used to regulate the flow of incoming and outgoing air into the building and at the same time reverse regulation of the circulating air (e.g. when the flow of incoming air is increased, the amount of circulation will decrease). The flaps are mechanically coupled in parallel and controlled by one BELIMO NM 24 SR servo motor with analog control or with safety function LF 24 SR. By directly controlling the servo motor, the ratio of fresh and circulating air can be set.

Type	A [mm]	B [mm]	C [mm]	D [mm]	E [mm]	F [mm]	G [mm]	H [mm]	I [mm]
IMK 200	400	420	440	200	220	240	21.5	60	485
IMK 225	500	520	540	250	270	290	21.5	60	535
IMK 250	500	520	540	300	320	340	21.5	60	535
IMK 285	600	620	640	300	320	340	21.5	60	585
IMK 315	600	620	640	350	370	390	21.5	60	635
IMK 355	700	720	740	400	420	440	21.5	60	685
IMK 400	800	820	840	500	520	540	21.5	60	785
IMK 450	1,000	1,020	1,040	500	520	540	21.5	60	936

Arches IFS 45, IFS 90



IFS 45

Fitting type	Connection dimension [mm]
IFS 200/45	400x200
IFS 225/45	500x250
IFS 250/45	500x300
IFS 285/45	600x300
IFS 315/45	600x350
IFS 355/45	700x400
IFS 400/45	800x500
IFS 450/45	1,000x500

■ IFS 45 arches

Used to connect plate or rotary exchangers by turning LEFT or RIGHT. By combining these arches, it is easy to turn at angles of 45-90-135-180°.



IFS 90

Fitting type	Connection dimension [mm]
IFS 200/90	400x200
IFS 225/90	500x250
IFS 250/90	500x300
IFS 285/90	600x300
IFS 315/90	600x350
IFS 355/90	700x400
IFS 400/90	800x500
IFS 450/90	1,000x500

■ IFS 90 arches

Used to connect plate or rotary heat exchangers by turning UP or DOWN. By combining these arches, it is easy to turn at angles of 90 and 180°.