

LSD-R – linear outlet with rotating deflector



Technical parameters

Version

Linear outlet with rotating deflector.

Construction

The outlets are made of aluminium as standard, the deflector of black (RAL 9005) polypropylene. Burn-in paint in basic RAL shades at extra cost, other colour variants on request. Deflector in white (RAL 9003) on request.

Installation

Linear outlets are designed for ceiling mounting for both supply and exhaust air. Installation height 2,6–4,0 m.

Mounting

using the screws on the front of the outlet or mounting in the plenum box using springs or mounting brackets.

Accessories

Plenum boxes made of galvanized steel, standard or insulated. Set for connection of outlets. Mounting bracket, springs.

Type key for ordering

linear result

LSD-R 10-1-1000 RAL9010

1 2 3 4

1 – implementation

10 – version without deflector

20 – version with deflector

2 – number of slots (1–4)

3 – length (800, 1000, 1500, 2000 mm)

4 – colour

without indication – transparent anodized
RAL 9010, 9016, 7035 or on request

plenum box

PBL-R 1-1-1000 1

1 2 3 4

1 – implementation

PBL-R – standard

PBLI-R – with external insulation of 6 mm

2 – number of slots anemostatu

3 – length of the anemostat

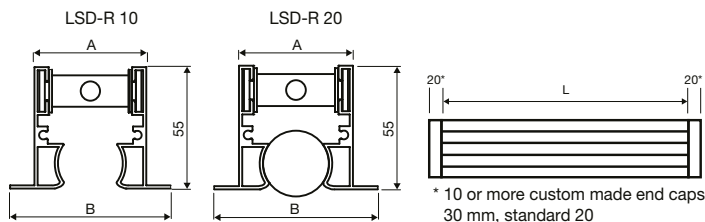
4 – connection of the anemostat
to the plenum box

1 – using CM springs

2 – using CVL mounting brackets

number of slots	length [mm]	LSD-R 10	LSD-R 20	PBL-R	PBLI-R
1	800	•	•	•	•
	1 000	•	•	•	•
	1 500	•	•	•	•
	2 000	•	•	•	•
2	800	•	•	•	•
	1 000	•	•	•	•
	1 500	•	•	•	•
	2 000	•	•	•	•
3	800	•	•	•	•
	1 000	•	•	•	•
	1 500	•	•	•	•
	2 000	•	•	•	•
4	800	•	•	•	•
	1 000	•	•	•	•
	1 500	•	•	•	•
	2 000	•	•	•	•

Dimensions



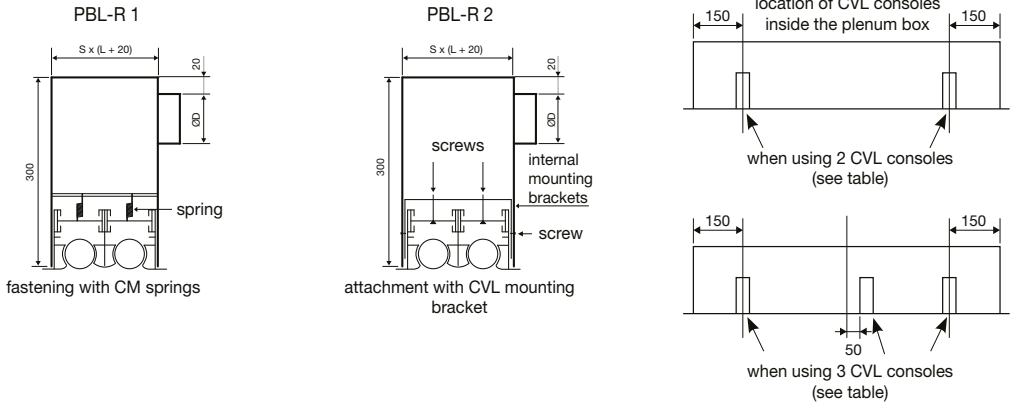
* 10 or more custom made end caps
30 mm, standard 20

number slots	length L [mm]	number and diameter of connections throats [mm]	A [mm]	B [mm]	S [mm]	number CVL mounting brackets**	number of springs CM**
1	800	1 × 98	39	56	43	2	2
	1000	1 × 98					
	1500	2 × 98					
	2000	3 × 98					
2	800	1 × 148	77	94	81	2	4
	1000	2 × 148					
	1500	3 × 148					
	2000	4 × 148					
3	800	1 × 198	115	132	119	2	4
	1000	2 × 198					
	1500	3 × 198					
	2000	4 × 198					
4	800	2 × 198	153	170	157	2	4
	1000	2 × 198					
	1500	3 × 198					
	2000	4 × 198					

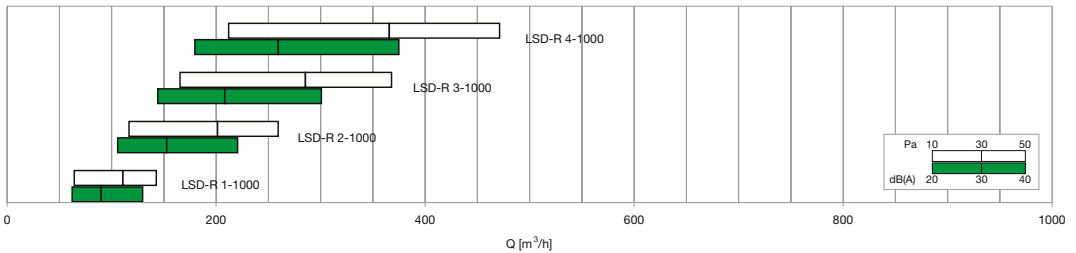
** accessories not included linear outlet

LSD-R – linear outlet with rotating deflector

Plenum boxes



Quick Design Table



Parameters for other lengths are obtained by a simple calculation: divide the required flow rate by the length of the outlet in metres and find this calculated value in the table, i.e. for a length of 1500 mm (1.5 m) and a required flow rate of 450 m^3/h , find the da'a for $Q = 450/1.5 = 300 m^3/h$ in the table.

Type	A_k [m^2]	Q [m^3/h]		L_{wa} [dB(A)]		$X_{0,25}$ [m]		Δp * [Pa]	
		min	max	min	max	min	max	min	max
LSD-R 1-1000	0,00620	60	140	-	42	3,3	7,7	10	50
LSD-R 2-1000	0,01240	120	260	23	44	4,3	9,4	10	50
LSD-R 3-1000	0,01860	170	370	24	46	4,8	10,4	10	50
LSD-R 4-1000	0,02480	210	470	24	46	5,0	11,1	10	50

* without plenum box and deflector

Explanatory notes:

Q [m^3/h] – air flow

A_k [m^2] – free discharge area

Δp , [Pa] – total pressure drop

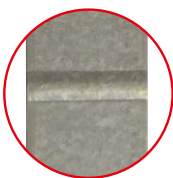
L_{wa} [dB(A)] – acoustic performance

$X_{0,25}$ [m] – air flow range to obtain a comfortable air speed in the living area under isothermal conditions of 0.25 m/s

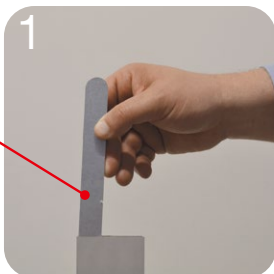
LSD-R – linear outlet with rotating deflector

Additional illustration

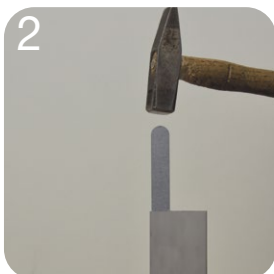
the joining results in a CC joining set



connection hole



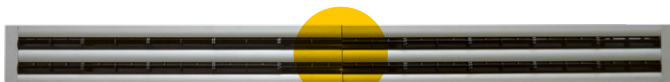
1
insert the extension into the connection hole



2
using a hammer, insert to a depth of 10–15 mm



3
connect both outlets



joint point

Accessories

CVL
mounting brackets



CM
spring



CG
hook for plenum box
PBL 1



CC
connection set
2 pcs

