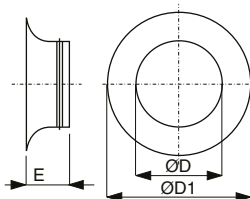


# Suction nozzles, mounting kits

## TADG, TADFG – inline suction nozzle



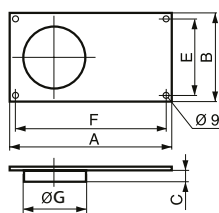
TADFG  
with protective  
grill



- suction nozzle to reduce hydraulic losses at the entrance of pipe systems
- applicable especially to the entrance of a circular spiro pipe by insertion
- made of galvanized steel
- the dimensions correspond to the nominal pipe diameters
- TADFG is additionally equipped with a grill
- the nozzles are always equipped with a single-edge rubber seal

Type	Ø D1	Ø D	E	Ø Pipe diameter	roof fans CTH/CTV, HCT
TAD(F)G 200	263	197	95	200	–
TAD(F)G 250	329	247	95	250	200/225
TAD(F)G 315	414	312	103	315	–
TAD(F)G 355	465	352	109	355	250/315
TAD(F)G 400	524	395	115	400	400
TAD(F)G 450	580	445	121	450	–
TAD(F)G 500	636	495	179	500	450
TAD(F)G 560	723	555	187	560	–
TAD(F)G 630	824	625	196	630	500

## IRC – transition to a circular piping

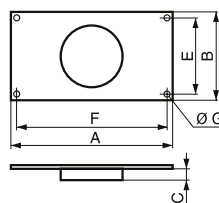


- for the connection of IRB, IRT fans to the circular pipe, transitions are supplied under the designation „IRC“, it is necessary to take into account a reduction of the flow by approx. 15%
- dimensions 400 and 450 on request

Type	A	B	C	E	F	Pipe diameter	Ø G
IRC-200	440	240	40	220	420	400×200	200
IRC-225	540	290	40	270	520	500×250	250
IRC-250	540	340	40	320	520	500×300	300
IRC-285	640	340	40	320	620	600×300	300
IRC-315	640	390	40	370	620	600×350	350
IRC-355	740	440	40	420	720	700×400	400

71

## MAR – adapter



- serves as a transition of one MIXVENT-TD fan to a square pipe (2 pcs in the delivery)

Type	A	B	C	E	F	Ø G
160+250	264	180	33.5	160	244	9
350	264	180	33.5	160	244	9
500	320	220	37	200	300	9
800	355	240	37	220	335	9
1000+1300	440	290	42	270	420	9
2000	540	355	52	355	520	9