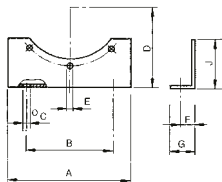


# Brackets

## PIE – mounting brackets

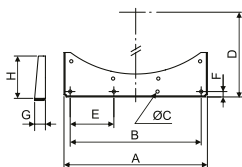


- brackets for fixing axial fans on a flat surface
- is made of sheet steel with anti-corrosion protection
- standard color black up to size 800, 900–1600 gray
- if the use of KSE vibration dampers is requested, a welded rigid frame corresponding to the size and weight of the fan must be placed between the mounting brackets and the dampers

Type	A	B	Ø C	D	Ø E	F	G	J	n*	weight [kg]
PIE 200	220	180	10	190	10	14	20	105	2	0.4
PIE 250	232	180	10	200	10	17	24	115	4	0.6
PIE 315	275	224	10	224	10	14	24	115	4	0.9
PIE 355	303	250	10	250	10	14	24	125	4	1.0
PIE 400	446	280	12.5	280	12.5	14	24	208	4	1.3
PIE 450	492	315	12.5	315	12.5	14	24	236	4	1.4
PIE 500	425	315	12.5	315	12.5	14	24	135	4	2.0
PIE 560	475	355	12.5	355	12.5	17	30	155	4	2.2
PIE 630	520	400	12.5	400	12.5	17	30	175	4	2.3
PIE 710	560	480	12.5	433	12.5	22	45	135	4	2.3
PIE 800	600	555	12.5	473	12.5	32	50	155	4	2.5
PIE 900	950	800	15.0	540	15.0	30	60	300	6	9.0
PIE 1000	1,020	880	15.0	573	15.0	35	60	300	6	9.1
PIE 1120	1,050	975	15.0	638	15.0	35	60	260	6	9.3
PIE 1250	1,100	1,030	15.0	714	15.0	35	60	280	6	10.0
PIE 1400	1,300	1,200	15.0	781	15.0	60	100	310	6	19.2
PIE 1600	1,750	1,650	20.0	910	20.0	60	100	450	8	33.6

\* number of holes

## PIE-V – mounting brackets



- brackets for fixing axial fans on a flat surface
- is made of sheet steel with anti-corrosion protection
- standard color black up to size 800, 900–1600 gray
- if the use of KSE vibration dampers is requested, a welded rigid frame corresponding to the size and weight of the fan must be placed between the mounting brackets and the dampers

Type	A	B	Ø C	D	E	F	G	H	weight [kg]
PIE-V 400	477	435	12.5	280	4x145	20	40	210	1.7
PIE-V 450	523	483	12.5	305	4x161	20	40	225	1.9
PIE-V 500	486	444	12.5	335	4x148	20	40	155	1.8
PIE-V 560	523	483	12.5	365	4x161	20	40	160	2.0
PIE-V 630	582	540	12.5	400	4x180	20	40	175	2.3
PIE-V 710	548	488	12.5	468	5x122	30	45	165	3.2
PIE-V 800	600	552	15	490	4x184	20	40	150	3.0
PIE-V 900	900	836	15	562	5x209	40	60	315	10.4
PIE-V1000	985	892	15	633	5x223	40	60	360	12.7
PIE-V1120	1,030	900	15	637.5	5x225	35	60	280	13.1
PIE-V1250	1,130	960	15	702.5	5x240	35	60	300	14.8
PIE-V 1400	1,250	1,100	15	781	5x275	60	100	320	21.3
PIE-V 1600	1,530	1,300	20	910	5x325	60	100	430	31.8