

MSU F – wall grid



Technical parameters

Version

Wall grilles are used to aesthetically cover the ventilation opening without an external frame in ventilation and air conditioning systems. They are designed for both supply and exhaust air. The spacing of the horizontal fixed slats is 12.5 mm. The wall grilles have a slat profile with a 0° or 15° angle (see cut). The slats are removable from the frame. The grilles are not equipped with air flow control as standard, R1-F control can be used.

The main advantages include:

- low noise level
- flush mounting
- good adjustment parameters
- possibility to direct the air flow
- wide range of colours
- simple design

Construction

The rectangular grids (including the leaves) are made of Al profile coated with transparent anodizing. Burn-in paint in basic RAL shades at extra cost, other colour variants on request.

Mounting

of MSU F series grilles is done by anchoring the frame directly to the wall and then covering the frame with plaster. The opening for the grille is in the basic dimension series W × H. The use of plenum boxes is recommended.

Accessories

Plenum boxes made of galvanised steel, standard or insulated. Control damper R1-F made of galvanised steel fitted with counter-rotating control leaves.

Type key for ordering

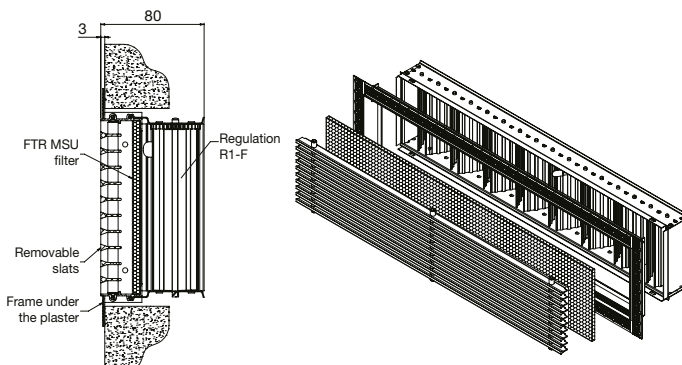
MSU F - 1.0 800 × 200 RAL9010

- 1 – type
- 2 – 1.0 – single row, 0° blade profile angle
- 3 – dimensions
- 4 – colour without indication – transparent anodised, RAL 9010, RAL 9016 others on request

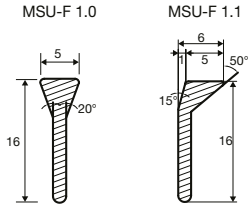
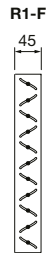
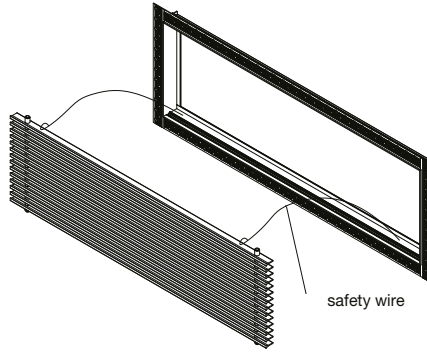
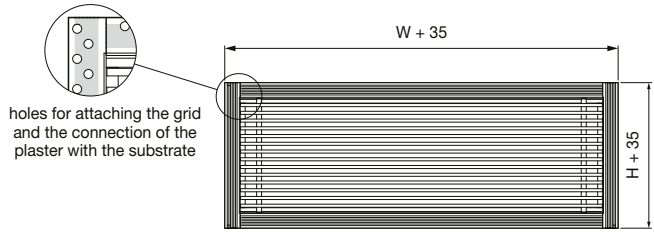
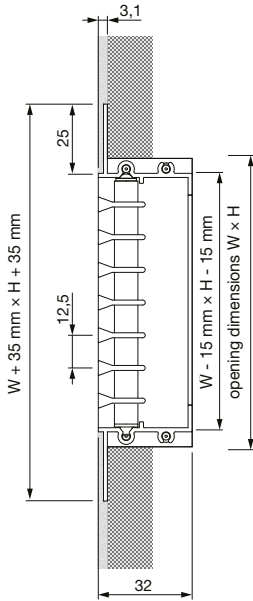
Accessories:

- | | |
|------|----------------------|
| R1-F | control damper |
| FTR | filter insert |
| PBF | plenum box |
| PBFI | plenum box insulated |

W×H [mm]	MSU F-1.0	MSU F-1.1	R1-F	FTR	PBF-H	PBF-I-H	PBF-V	PBFI-V
400×75	•	•	•	•	•	•	•	•
500×75	•	•	•	•	•	•	•	•
600×75	•	•	•	•	•	•	•	•
800×75	•	•	•	•	•	•	•	•
1000×75	•	•	•	•	•	•	•	•
1200×75	•	•	•	•	•	•	•	•
200×100	•	•	•	•	•	•	•	•
300×100	•	•	•	•	•	•	•	•
400×100	•	•	•	•	•	•	•	•
500×100	•	•	•	•	•	•	•	•
600×100	•	•	•	•	•	•	•	•
800×100	•	•	•	•	•	•	•	•
1000×100	•	•	•	•	•	•	•	•
1200×100	•	•	•	•	•	•	•	•
300×125	•	•	•	•	•	•	•	•
400×125	•	•	•	•	•	•	•	•
500×125	•	•	•	•	•	•	•	•
600×125	•	•	•	•	•	•	•	•
800×125	•	•	•	•	•	•	•	•
1000×125	•	•	•	•	•	•	•	•
1200×125	•	•	•	•	•	•	•	•
300×150	•	•	•	•	•	•	•	•
400×150	•	•	•	•	•	•	•	•
500×150	•	•	•	•	•	•	•	•
600×150	•	•	•	•	•	•	•	•
800×150	•	•	•	•	•	•	•	•
1000×150	•	•	•	•	•	•	•	•
1200×150	•	•	•	•	•	•	•	•
300×200	•	•	•	•	•	•	•	•
400×200	•	•	•	•	•	•	•	•
500×200	•	•	•	•	•	•	•	•
600×200	•	•	•	•	•	•	•	•
800×200	•	•	•	•	•	•	•	•
1000×200	•	•	•	•	•	•	•	•



MSU F – wall grid



slat profile



product presentation (video)

dimensions – wall grid

PBF-V

PBF-H

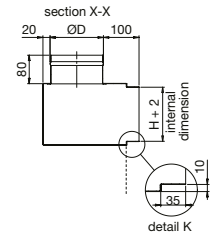
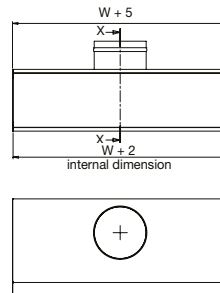
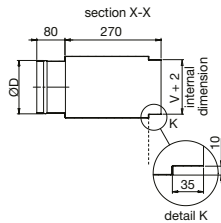
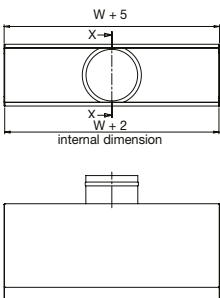


Table of the ØD dimension and the number of connection sockets see catalog sheet PBZ – plenum boxes later in this chapter. For the grid height H = 75 mm, the connection neck is DN80.