

KSE – vibration dampers

KSE-AM



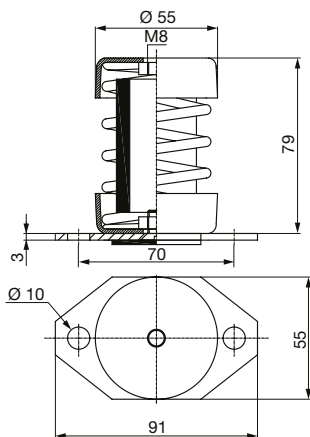
- metal anti-vibration elements with holes
- enable mounting and centering on the base

Easy choice

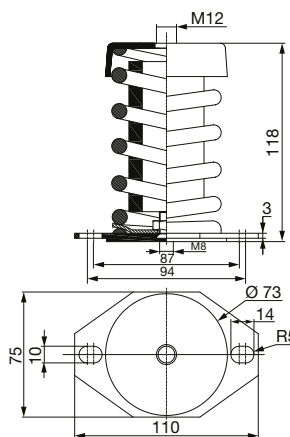
Determine the total weight of the fan with accessories and divide by 4. Select a suitable anti-vibration element according to the load or in accordance with the prescribed static deformation.

E.g. fan TGT/4-1000 with accessories weighing 300 kg, $300/4 = 75$ kg.
Selection of 4x KSE-AM-100M with 15 mm static deformation.

KSE-AM-25M – KSE-AM-125M



KSE-AM-150M – KSE-AM-550M



Type	max. load* [kg]
KSE-AM-25M	25
KSE-AM-50M	50
KSE-AM-75M	75
KSE-AM-100M	100
KSE-AM-125M	125

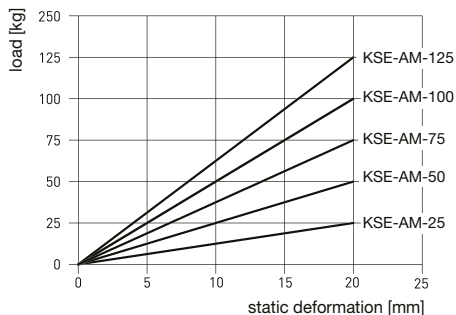
* for 1 silent-block

Type	max. load* [kg]
KSE-AM-150M	150
KSE-AM-200M	200
KSE-AM-250M	250
KSE-AM-350M	350
KSE-AM-450M	450
KSE-AM-550M	550

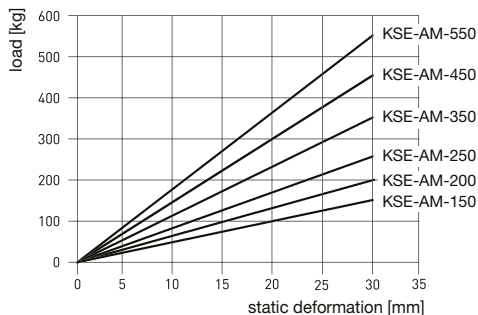
* for 1 silent-block

7¹

static deformation



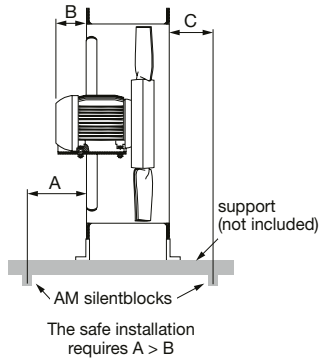
static deformation



KSE – vibration dampers

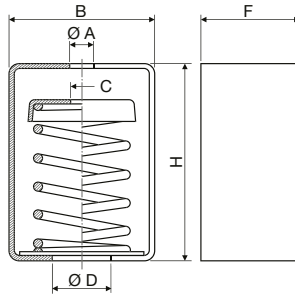
Anti-vibration installation of a short cabinet fan using KSE-AM

If the use of anti-vibration elements KSE-AM is required for fans with a short case, it is recommended to install a support to distribute the load.



Size TGT, THGT	A [mm]	C [mm]
400	250	60
450	250	70
500	250	70
560	280	80
630	280	80
710	380	80
800	380	90
900	450	100
1000	450	100
1250	500	100

KSE-TM



- metal anti-vibration elements with holes
- enable installation in the ceiling

Type	B [mm]	F [mm]	H [mm]	Ø A [mm]	Ø D [mm]	C [mm]	load [kg]	deformation [mm]
KSE-TM-25	75	55	100	12	30	M8	25	24 ± 3.0
KSE-TM-50	75	55	100	12	30	M8	50	24 ± 3.0
KSE-TM-75	75	55	100	12	30	M8	75	24 ± 3.0
KSE-TM-100	75	55	100	12	30	M8	100	24 ± 3.0
KSE-TM-125	75	55	100	12	30	M8	125	24 ± 3.0