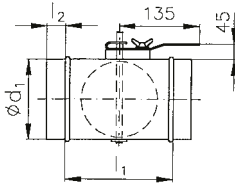


Segmented shapes

MSK – throttle valve



With metal hand control and preparation for Belimo actuator.

Ordering
d₁ = 160 mm
„MSK 160 – throttle valve“

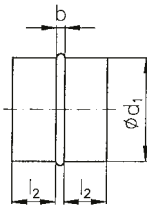
Above Ø 630 can only be made after prior consultation with the manufacturer. The weights are only approximate.

See the full range of flaps K 7.1

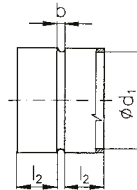
d ₁ [mm]	80	90	100	125	140	150	160	180	200	225	250
l ₁ [mm]	120	120	120	120	120	120	170	170	170	130	130
l ₂ [mm]	40	40	40	40	40	40	40	40	40	60	60

d ₁ [mm]	280	315	355	400	450	500	560	630	710	800
l ₁ [mm]	230	230	190	440	440	440	440	400	600	600
l ₂ [mm]	60	60	80	80	80	80	80	100	100	100

SV – internal coupling, SN – external coupling



SV



SN

For connecting spiro pipes, fittings and flexible hoses.

Ordering
d₁ = 160 mm
„SV 160 – internal coupling“
„SN 160 – external coupling“

Above Ø 630 can only be made after prior consultation with the manufacturer. The weights are only approximate.

d ₁ [mm]	80	100	125	140	150	160	180	200	225	250	280	315	355	400	450	500	560	630	710	800
b [mm]	15	15	15	15	15	15	15	15	15	15	15	15	15	20	20	20	20	20	25	25
l ₂ [mm]	40	40	40	40	40	40	40	40	40	60	60	60	80	80	80	80	80	100	100	100
m [kg]	0.1	0.2	0.2	0.2	0.2	0.3	0.3	0.3	0.4	0.6	0.7	0.9	1	1.5	1.7	1.8	2.1	2.7	3.8	4.3