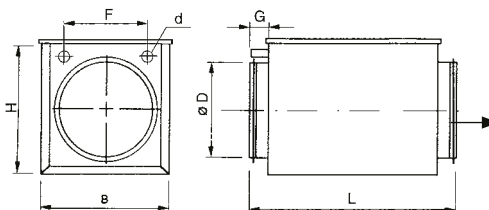


MBW – water heaters



Technical parameters

■ MBW – water heater

- intended for circular pipes
- the casing of the water heater is made of galvanized sheet metal
- aluminum slats on copper tubes
- the connection is a collet transition with a thread, which is not included in the delivery, or by soldering (see table)
- the heater is mounted approx. 1 m behind the fan
- if the heater is installed in front of the fan, it is necessary to determine whether the outlet air temperature does not exceed the permitted operating temperature of the fan
- maximum working pressure is 10 bar
- maximum operating temperature of 100 °C
- it is always necessary to use anti-freeze protection for supply units
- ESU – three-way mixing valves, servo-drives, etc.
- during assembly, it is necessary to remember to drain the hot water system and vent

Type	fan MIXVENT-TD	fan RM-N	Ø D [mm]	B [mm]	H [mm]	d [mm]	F [mm]	G [mm]	L [mm]
MBW-100	250/100	100	100	183	225	10	140	40	380
MBW-125	350/125	125	125	183	225	10	140	40	380
MBW-160	500/160	160	160	258	305	10	215	40	380
MBW-200	800/200	200	200	258	305	10	215	40	380
MBW-250	1000-1300/250	250	250	333	385	22	290	40	380
MBW-315	2000/315	315	315	408	460	22	365	40	380
MBW-355	4000/355	355	355	479	534	22	400	65	430
MBW-400	6000/400	400	400	479	534	22	400	65	430
MBW-450	-	450	450	529	685	22	425	65	465
MBW-500	-	500	500	529	685	22	425	65	465



proposal
and consultation
of the regulator
tel. 602 679 469

7¹

Type	air flow [m³/h]	inlet temperature [°C]	Water temperature gradient 80/60°C				Water temperature gradient 60/40°C				piping Ø connection [mm]	weight [kg]
			power kW	air pressure loss [Pa]	water pressure loss [kPa]	water flow [l/h]	power kW	air pressure loss [Pa]	water pressure loss [kPa]	water flow [l/h]		
MBW 100	145	0	1.7	22	0	70	1.0	22	0	40	10	5.8
MBW 125	215	0	2.1	41	1	90	1.2	41	0	50	10	5.8
MBW 160	355	0	4.6	26	4	200	3.0	26	2	130	10	7.7
MBW 200	555	0	6.1	51	7	270	4.0	51	3	170	10	7.7
MBW 250	900	0	9.7	49	4	430	6.2	49	2	270	22	9.6
MBW 315	1,410	0	16.6	39	6	730	10.9	39	3	470	22	11.9
MBW 355	1,800	0	23.2	41	11	1,020	12.0	41	7	670	22	14.5
MBW 400	2,280	0	25.6	50	9	1,130	16.9	50	6	730	22	20.5
MBW 450	2,900	0	38.3	41	15	1,680	16.9	41	10	1,120	22	20.3
MBW 500	3,500	0	41.1	49	17	1,810	27.6	49	10	1,210	22	20.5

values apply to supply air at 0 °C

Characteristics

