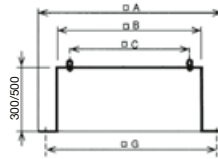


Mounting bases

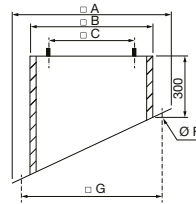
JBS – mounting base



- mounting base for fans
- made of galvanized sheet steel
- inside it is insulated against condensation
- insulation thickness 11 mm
- the height can be chosen 300 or 500 mm, other heights on special order (400, 600, 700, 800 and 900)

JBS	□ A	□ B	□ C	□ G
300	470	289	245	380
435	600	419	330	510
560	725	544	450	635
630	795	614	535	705
710	875	694	590	785
905	1065	884	750	975
1,100	1,260	1,079	840	1,170
1,250	1,410	1,230	950	1,320

JBS-S – mounting base for pitched roofs

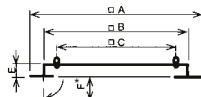
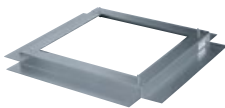


size 1100 and 1250 has a height of 400

- mounting base for fans on pitched roofs, inside is equipped with anti-condensation insulation for pitched roofs: 20°, 25°, 30°, 35°, 40°, 45°
- insulation thickness 11 mm

JBS	□ A	□ B	□ C	F	□ G
300	470	290	245	13	380
435	600	419	330	15	510
560	725	545	450	15	635
630	795	615	535	15	705
710	875	695	590	18	785
905	1,065	885	750	18	975
1,100	1,260	1,080	840	18	1,170
1,250	1,410	1,230	950	18	1,320

JMS – mounting frame



* flexible anchoring plate

- mounting frame for roof fans TH, CRV, CRH and HCT
- made of galvanized sheet steel

JMS	□ A	□ B	□ C	E	F
300	470	290	245	50	70
435	600	420	330	50	70
560	725	545	450	50	70
630	795	615	535	50	70
710	875	695	590	50	70
905	1,065	885	750	60	70
1,100	1,260	1,080	840	60	70
1,250	1,410	1,230	950	60	70