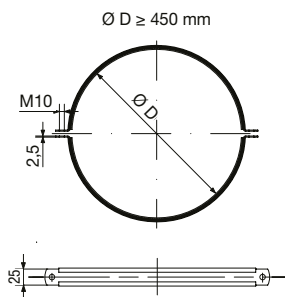
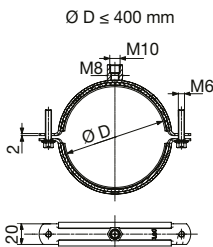


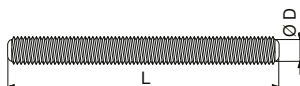
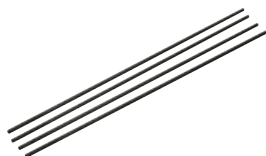
## Circular sleeves



- with or without rubber filling for vibration damping (EPDM)
- for fixing circular pipes or flexible hoses
- preparation for threaded rod in the upper part of the sleeve only up to and including size 400, for larger diameters the sleeve is hung on two threaded rods via the connecting nuts on the sides of the sleeve

$\varnothing D$ [mm]	weight [kg]	$\varnothing D$ [mm]	weight [kg]
80	0,2	355	0,5
100	0,2	400	0,5
125	0,2	450	0,6
140	0,2	500	0,6
150	0,2	560	0,7
160	0,2	630	0,8
180	0,3	710	0,9
200	0,3	800	1,1
225	0,3	900	1,2
250	0,3	1000	1,3
280	0,3	1120	1,5
315	0,4	1250	1,6

## ZT – threaded rods

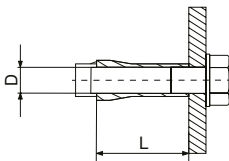


- suspension of air handling equipment on structures and ceilings
- made of uncoated steel
- available in M4 × 1000 mm, M8 × 1000 mm, M8 × 2000 mm, M10 × 1000 mm, M10 × 2000 mm

Type	D [mm]	L [mm]
M4 × 1000	M4	1000
M8 × 1000	M8	1000
M8 × 2000	M8	2000
M10 × 1000	M10	1000
M10 × 2000	M10	2000

## Wedge anchors

7<sup>4</sup>

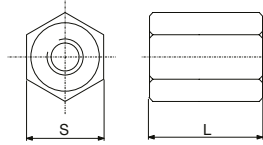


- permanent anchoring in concrete
- for screws or threaded rods
- made of galvanised steel

Type	D [mm]	L [mm]
M8/30	M8	30
M10/40	M10	40

## Mounting material

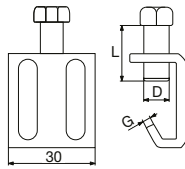
### DISTANCE – coupling nut



- for connecting threaded rods or as a spacer

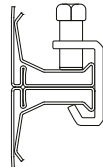
Type	S [mm]	L [mm]	weight [g]
DISTANCE M8	13	24	2
DISTANCE M10	17	30	4

### CS – retractable clamp



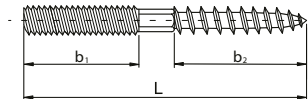
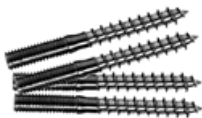
- for flange connections of larger dimensions

Type	D [mm]	L [mm]	G [mm]
CS clamp	M8	20	2,5



method of removing flange connections

### KOMBI screws



- combination screw and screw
- hexagon between threads for easier assembly
- made of galvanised steel

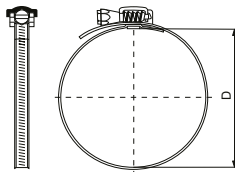
Type	Ø D [mm]	b <sub>1</sub> [mm]	b <sub>2</sub> [mm]	L [mm]
M8/60	M8	20	30	60
M8/80	M8	35	35	80
M8/100	M8	40	50	100

### FKM8/100 – hinged dowels



It is used to hang the HVAC ducts in plasterboard ceilings and in all cavities. Thread M8/100.

## OSJ – quick-release buckles



Stainless steel buckle 9 mm wide for easy and quick connection flexible hoses with other mounting parts. For DN 60-165, 60-215, 60-270, 60-325 and 60-525.

Type	Ø D [mm]
OSJ 165	60-165
OSJ 215	60-215
OSJ 270	60-270
OSJ 325	60-325
OSJ 525	60-525

## NS – nylon clips



Nylon quick release buckle, for larger diameters it is necessary to connect 2 buckles in a row. Optimum storage temperature 5-40 °C. For firm connection of flexible pipe to circular pipe and fittings. Possibility of attaching smaller HVAC and MAR ducts to supporting structures.

Type	L [mm]	Ø max [mm]
NS 370	370	102
NS 430	430	133
NS 500	500	140
NS 780	780	210
NS 1168	1168	315

## OSR – steel clips, OSR SX – stainless steel buckles



The OSV or OSV SX steel/stainless steel clamp with screw clamp creates a tightening strap that allows withdrawal by means of a screw. For rigid connection of flexible pipe to circular pipe and fittings. Possibility of attaching smaller HVAC ducts to supporting structures.

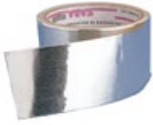
Packed in a roll of 30 m (clamps not included).

## OSV – clamps, OSV SX – stainless steel clamps



Clamp for OSR and OSR SX clamps – 50 pcs in pack.

Vitomin tape



Self-adhesive aluminium tape.  
Temperature resistance: -40 °C to +80 °C.

Type	width [mm]	length [m]
Vitomin 50/50	50	50
Vitomin 75/50	75	50
Vitomin 100/50	100	50

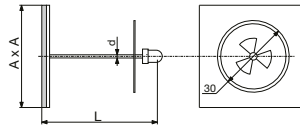
PVC adhesive tape



Self-adhesive PVC tape.

Type	width [mm]	length [m]
PVC 50/33	50	33

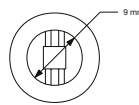
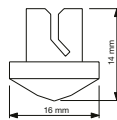
TRN – self-adhesive thorns



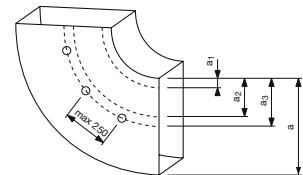
They are equipped with a self-adhesive base, serve as a carrier for insulation and insulation boards for pipes, etc. Designed for 40, 50 and 60 mm insulation.

Type	L [mm]	d [mm]	A [mm]
TRN 43	43	2,7	50
TRN 53	53	2,7	50
TRN 63	63	2,7	50

QUICK – clamps for cover plates



It is used for simple and quick attachment of the riser plates (deflectors) in the square pipe. Pack of 100 pcs. The product is suitable for sheet thickness 0,4-1,1 mm.



Pipe width [mm]	number of attachments on one side [ks]	recommended spacing		
		a1	a2	a3
400–800	1	a/3	–	–
801–1600	2	a/4	a/2	–
1601–2000	3	a/8	a/3	a/2

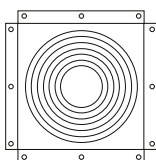
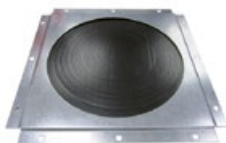
installation example

## Vazilen 250, 500 – assembly lubricant



- for connecting hoses with couplings and spigots with sealing ring
- quick and easy application
- high resistance to internal and external chemical influences
- standard delivery 250 ml or 500 ml

## Vitolen Wall – universal wall passage



Seal designed to connect the pipe to the wall.

Type	suitable for pipes Ø [mm]
80/200	DN80–DN200
250/500	DN250–DN500

## Vitolen – sealing tapes



Vitolen sealing tape.

Type	thickness [mm]	width B [mm]	length* [m]
03-09-150	3	9	150
04-09-75	4	9	75
04-09-100	4	9	100
04-10-100	4	10	100

\* standard packaging

## Sealants



### ■ Acrylic sealant 310 ml (white)

Designed mainly for sealing of corrugations in the production of HVAC pipes. Compatible with coatings, universal use in the construction industry.

### ■ Silicone sealant 310 ml (transparent)

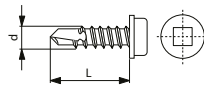
One-component sealant. Designed for sealing the flanges of HVAC pipes. Universal use in construction, also suitable for bonding non-porous materials. Resistant to ageing and common chemicals. Not intended for the food industry.

### ■ Sealant 310 ml (grey)

Based on polyurethane. Excellent adhesion to galvanized sheet metal, copper, titanium zinc and plastics. Easy to apply, recoatable after curing and permanently elastic.

## Mounting material

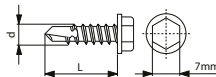
### TEKX – self-drilling screws with internal square



Steel bolt for connecting air handling parts, NSPH square head extension available.

Type	length L [mm]	Ød [mm]	packaging [ks]
TEKX 4.2/13	13	4,2	1000
TEKX 4.2/16	16	4,2	1000
TEKX 4.2/19	19	4,2	1000

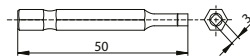
### TEKK – self-drilling screws with hexagonal head



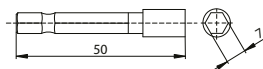
Steel bolt for connecting air handling parts, NSH hexagon socket available.

Type	length L [mm]	Ød [mm]	packaging [ks]
TEKK 4.2/16	16	4,2	1000
TEKK 4.2/19	19	4,2	1000

### NSPH/NSH – bolt mounting attachment (BIT)



NSPH



NSH

Extension with square (NSPH) or hexagonal head (NSH).

### NSM – beam clamps



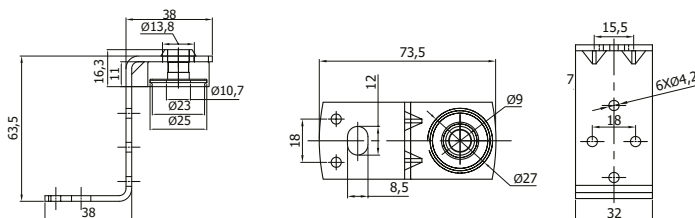
Suitable for mounting all suspension systems using threaded rods on steel beams (I-profiles). Allows connection without drilling or welding. Types NSM8 and NSM10.

### RSZ – quick-release hinges



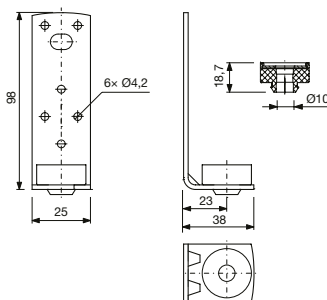
The variable length allows quick installation of lightweight ducts or distribution elements. Types 500, 700 and 1000. Maximum load capacity 35 kg.

## ISA Z – mounting angle



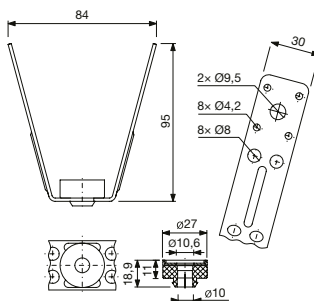
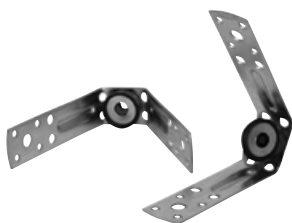
- ISA mounting angles for hanging fans, supply and recovery units, accessories for threaded rods
- suitable for IRB, IRT, CVB, CVT, CAB, RM, MIXVENT, CVAB-N, CVAT-N, etc.
- suitable for accessories IFL, MFL, MBE, IBE, etc.
- made of electroplated steel sheet
- with anti-vibration insert

## ISA L – mounting angle



- ISA mounting angles for hanging fans, supply and recovery units, accessories for threaded rods
- suitable for IRB, IRT, CVB, CVT, CAB, RM, MIXVENT, CVAB-N, CVAT-N, etc.
- suitable for accessories IFL, MFL, MBE, IBE, etc.
- made of electroplated steel sheet
- with anti-vibration insert

## ISA V – mounting angle

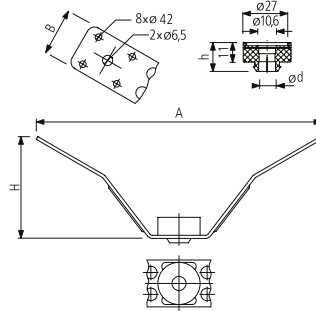


- ISA mounting angles for hanging fans, supply and recovery units, accessories for threaded rods
- suitable for IRB, IRT, CVB, CVT, CAB, RM, MIXVENT, CVAB-N, CVAT-N, etc.
- suitable for accessories IFL, MFL, MBE, IBE, etc.
- made of electroplated steel sheet
- with anti-vibration insert

ISA V – straight wings

# Mounting material

## ISA R – mounting angle



- ISA mounting angles for hanging fans, supply and recovery units, accessories for threaded rods
- suitable for IRB, IRT, CVB, CVT, CAB, RM, MIXVENT, CVAB-N, CVAT-N, etc.
- suitable for accessories IFL, MFL, MBE, IBE, etc.
- made of electroplated steel sheet
- with anti-vibration insert

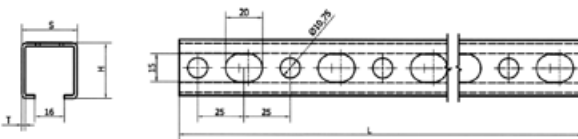
ISA R – broken wings

## LN – carrier rail



They are suitable for hanging HVAC ducts.

Type	S [mm]	H [mm]	T [mm]	L [m]
LN 30-20-2	30	20	1,5	2
LN 30-30-2	30	30	1,5	2
LN 30-43-2	30	43	1,5	2



## Zinc spray

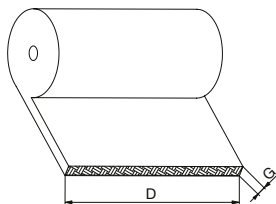
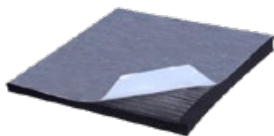


Provides long-term corrosion protection for all metals. Designed for optical repair of defective areas on galvanized material.



## Mounting material

### ISOFLEX G, ISOFLEX AI – insulating mats

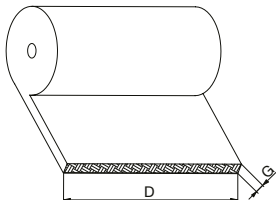
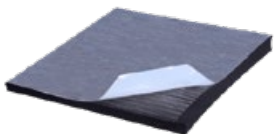


Self-adhesive synthetic rubber mats suitable for insulation of square or circular pipes.

- protects against condensation
- thermal and acoustic insulation
- very low water vapour permeability
- operating temperature range from -40 °C to +85 °C
- thermal conductivity 0,032 (at -40 °C) to 0,040 (at +60 °C) W/(m\*K)
- ISOFLEX G – standard design
- ISOFLEX AI – version with aluminium foil on the outer sheath

Type	G [mm]	D [mm]	total area [m <sup>2</sup> ]
ISOFLEX 09	9	1000	20
ISOFLEX 13	13	1000	14
ISOFLEX 19	19	1000	10

### ISOFLEX-N, ISOFLEX-N AL – insulating mats



Self-adhesive synthetic rubber mats suitable for insulation of square or circular pipes.

- protects against condensation
- thermal and acoustic insulation
- very low water vapour permeability

#### Variants:

##### ISOFLEX-N

- standard version

##### ISOFLEX-N AL

- version with an aluminium foil cover on the outer sheath

Type	G [mm]	D [m]	total area [m <sup>2</sup> ]	working temperature [°C]	thermal conductivity [W/(m*K)]
ISOFLEX-N 10	10	1	10	-40 až +70	0,036
ISOFLEX-N 13	13	1	14	-40 až +70	0,036
ISOFLEX-N 19	19	1	20	-40 až +70	0,036
ISOFLEX-N AL 10	10	1,5	15	-40 až +85	0,034
ISOFLEX-N AL 12	12	1,5	22,5	-40 až +85	0,034
ISOFLEX-N AL 20	20	1,5	30	-40 až +85	0,034

## Mounting material

### ISOFLEX TAPE N – insulating adhesive tape



- designed for ventilation systems
- for connecting the ventilation system ducts fitted with rubber insulation
- the surface to be joined must be clean and at a temperature higher than 4 °C
- pack length 15 m
- tape thickness 3 mm
- ambient temperature -40 to +85 °C
- thermal conductivity 0,034 W/(m<sup>2</sup>K) (at 0 °C)

Type	S [mm]	length [m]	thickness [mm]
ISOFLEX TAPE N 50	50	15	3
ISOFLEX TAPE N 100	100	15	3



tape installation procedure

### MINIAXSMOKE, PUREAXSMOKE



MINIAXSMOKE



PUREAXSMOKE

Smoke cartridges are suitable for flow visualization, testing smoke alarms, air filters or fans, for photography, etc.

#### Variants:

##### MINIAXSMOKE

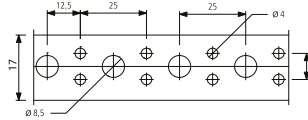
- standard version, white smoke

##### PUREAXSMOKE

- version for use in sensitive environments (chloride-free), white smoke

Type	smoke emission time [s]	volume of smoke [m <sup>3</sup> ]	size 1 cartridge [mm]	number of pieces in packaging [ks]
MINIAXSMOKE 40	40	2,5	32 x Ø 14	10
MINIAXSMOKE 65	65	8,5	32 x Ø 18	10
PUREAXSMOKE AX3	40	2,5	32 x Ø 14	10
PUREAXSMOKE AX9	90	8,5	32 x Ø 18	10

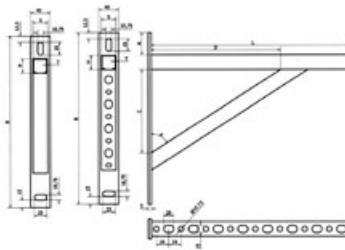
## PZ – tapes



Perforated suspension tape with a wide range of applications.

- for quick hanging and fixing of pipes
- material zinc
- sheet thickness 0.6 mm
- packaging 25 m

## K500, K700 – console type T

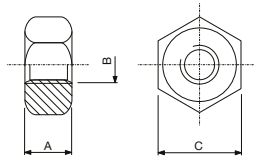


Universal wall bracket for fixing pipes.

- use on ceiling or wall, risers
- material zinc

Type	S [mm]	H [mm]	A [mm]	B [mm]	C [mm]	D [mm]	L [mm]
WK-LDB-30-30-500	30	30	42	350	160	245	500
WK-LDB-30-30-700	30	30	42	350	195	345	700

## Nut M8, M10



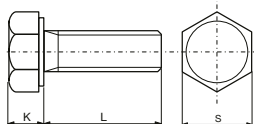
Hex nut.

- material steel
- galvanically treated
- packaging 100 pcs

Type	A [mm]	B [mm]	C [mm]
M8	5	8	13
M10	5	10	17

74

## Bolts M8, M10



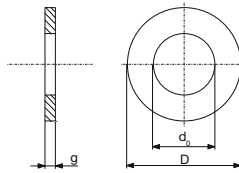
Hexagon bolt.

- material steel
- electroplated
- packaging 100 pcs

Type	K [mm]	L [mm]	S [mm]
M8/25	5	25	13
M10/25	5	25	17

## Mounting material

### PV – pads M 8,4, M 10,5

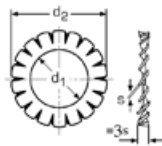


Large flat washers.

- material steel
- electroplated
- packaging 100 pcs

Type	g [mm]	d <sub>o</sub> [mm]	D [mm]
M 8,4	1,6	8,4	16
M 10,5	2,0	10,5	20

### VP – fan pads M 8,4, M 10,5

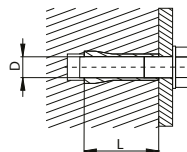


Fan pads.

- material steel
- electroplated
- packaging 100 pcs

Type	d <sub>1</sub> [mm]	d <sub>2</sub> [mm]	s [mm]
M 8,4	8,4	14	0,8
M 10,5	10,5	17	1,0

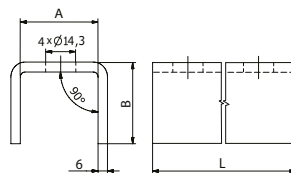
### OCM – brass expansion dowel M8, M10



- use in concrete or stone
- in the ceiling and in the wall
- internal metric thread
- suitable in combination with threaded rod or screws
- material brass
- packaging 1 piece

Type	D [mm]	L [mm]
M8	8	30
M10	10	35

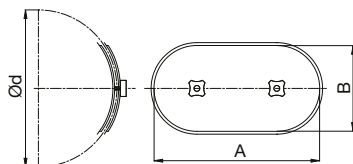
### SPM – coupling of mounting rails



- use for connecting mounting rails
- material sheet steel
- packaging 1 piece

Type	A [mm]	B [mm]	L [mm]
SPM 30	43	27	184
SPM 40	43	47	184

## RDK – inspection door for circular pipes

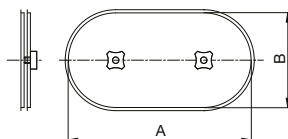


RDK inspection door for circular pipes with CR EPDM sealing. The design of the door and the location of the sealing profile ensure a high airtightness class. RDK provides a very simple and effective solution for closing and sealing access openings in ductwork. The openings created in the duct for the inspection door must be sized to meet the requirements of EN 12097.

The inspection door shall be installed in a pre-prepared opening with dimensions according to the template supplied.

Type	Ød [mm]	A [mm]	B [mm]	weight [kg]	suitable for pipelines [mm]
RDK 100	100	180	80	0,3	96–105
RDK 125	125	180	80	0,3	121–130
RDK 150	150	200	100	0,4	130–155
RDK 160	160	200	100	0,4	156–190
RDK 200	200	200	100	0,4	191–240
RDK 250	250	200	100	0,4	241–300
RDK 315	315	200	100	0,4	301–360
RDK 355	355	300	200	1,0	341–380
RDK 400	400	300	200	1,0	381–420
RDK 450	450	300	200	1,0	421–470
RDK 500	500	300	200	1,0	471–530
RDK 560	560	400	300	2,0	531–600
RDK 630	630	400	300	2,0	601–670
RDK 710	710	400	300	2,0	671–750
RDK 800	800	400	300	2,0	751–850

## RDH – inspection element for square pipes



Type	A [mm]	B [mm]
RDH 180×80	180	80
RDH 200×100	200	100
RDH 300×150	300	150
RDH 300×200	300	200
RDH 400×200	400	200
RDH 400×300	400	300
RDH 500×300	500	300
RDH 500×400	500	400
RDH 600×400	600	400
RDH 600×450	600	450
RDH 700×500	700	500

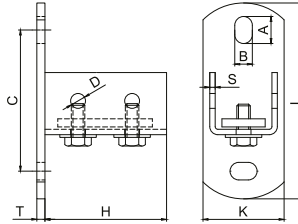
7<sup>4</sup>

RDH inspection door for square pipes with CR EPDM sealing. The design of the door and the location of the sealing profile ensure a high airtightness class. RDH provides a very simple and effective solution for closing and sealing access openings in ductwork. The openings created in the duct for the inspection door must be sized to meet the requirements of EN 12097.

The inspection door shall be installed in a pre-prepared opening with dimensions according to the template supplied.

## Mounting material

### KSL 27/18, 28/30 – saddle grip



The saddle grip is ideal for making different fastening variants. With these elements, it is possible to build stable load-bearing partitions using mounting beams, even in confined mounting conditions, e.g. in shafts.

- the 27×18, 28×30 saddle bracket is supplied including 2pcs M8×20 bolts, 2pcs 8,4×27,0×2,0 washers and a double threaded plate.

Type	AxB [mm]	C [mm]	D [mm]	H [mm]	K [mm]	L [mm]	S [mm]	T [mm]	suitable for profile	packaging [ks]
KSL 27×18, 28×30	20×11	74,5	24×11	95	40	120	2	4	27×18, 28×30	50