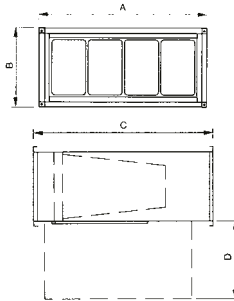
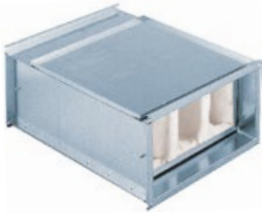
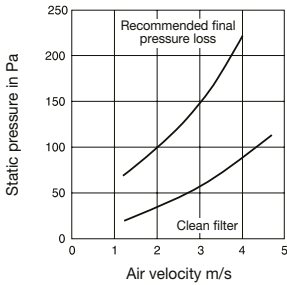


IFL – pocket filter M5



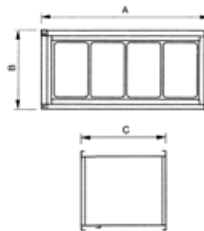
- the filter cartridge for the square pipe is designed for the M5 pocket filter (ISO coarse 80%), the filter must be ordered separately, it is also possible to supply the filter F7 (ISO ePM10 75%), G3 (ISO coarse 50%), the cartridge is supplied as standard without filter insert
- the cassette is made of galvanized steel, the filter is removed through the door, you must remember the free space for opening the door and changing the filter
- intakes for a differential pressure sensor can be fitted on the cabinet, which can be used to indicate filter clogging
- IFR – replacement filter cartridge

Type M5



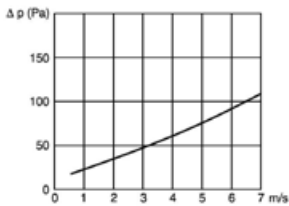
Type	for fan type IRB/IRT	piping WxH	[mm]				weight [kg]
			A	B	C	D	
IFL 200/40-20	200	400x200	440	240	503	400	5.8
IFL 225/50-25	225	500x250	540	290	503	400	7.2
IFL 250/50-30	250	500x300	540	340	503	400	7.8
IFL 285/60-30	285	600x300	640	340	583	400	9.5
IFL 315/60-35	315	600x350	640	390	583	400	10.0
IFL 355/70-40	355	700x400	740	440	583	400	12.0
IFL 400/80-50	400	800x500	840	540	583	400	14.0
IFL 450/100-50	450	1,000x500	1,040	540	583	400	15.9

IFLK – short plate filter G4



- the filter cartridge for the square pipe is equipped with a plate filter G4 (ISO coarse 60%) as standard, the filter is part of the cartridge
- the cassette is made of galvanized steel, the filter is removed through the door, you must remember the free space for opening the door and changing the filter
- intakes for a differential pressure sensor can be fitted on the cabinet, which can be used to indicate filter clogging
- IFRK – replacement filter cartridge
- suitable for DIRECT AIR assembly units

Type G4



Type	for fan type IRB/IRT	piping WxH	[mm]		
			A	B	C
IFLK 200/40-20	200	400x200	440	240	190
IFLK 225/50-25	225	500x250	540	290	190
IFLK 250/50-30	250	500x300	540	340	190
IFLK 285/60-30	285	600x300	640	340	190
IFLK 315/60-35	315	600x350	640	390	190
IFLK 355/70-40	355	700x400	740	440	190
IFLK 400/80-50	400	800x500	840	540	190
IFLK 450/100-50	450	1,000x500	1040	540	190