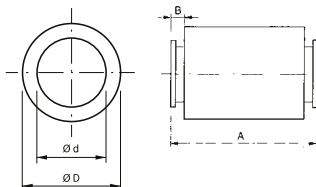


Noise suppressors

TAA, TAAC – silencer for circular ducts

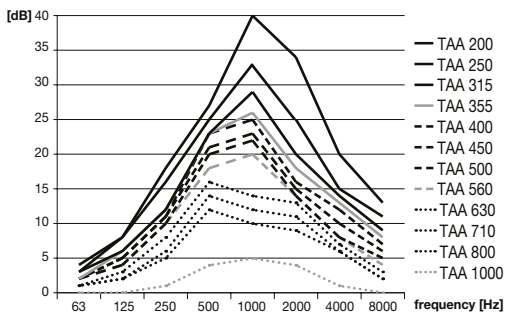


Pitch circles, hole dimensions and their location in the flanges correspond to fans of the TCBT, TGT, etc. series from K 1.5

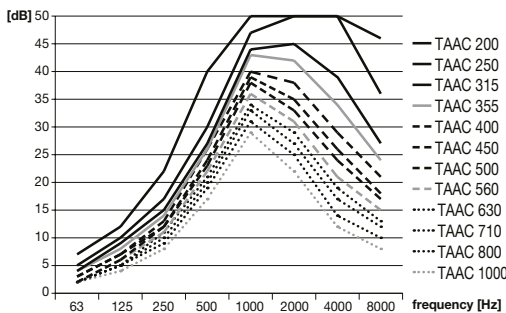
- the silencer casing is made of galvanized sheet, version with or without a core
- the silencer flanges are identical to the dimensions of the TXR, TCB and TGT fan flanges
- enables significant noise attenuation to be achieved
- it can be installed very simply
- it is possible to connect several silencers together to achieve extremely good noise suppression
- the pressure loss of the silencer is considered to be 2 times the pressure loss of the smooth pipe
- larger and atypical diameters must be discussed with the manufacturer
- on request TAA BR F400(120)

Coreless type	Core type	A [mm]	B [mm]	$\varnothing D$ [mm]	$\varnothing d$ [mm]	outer \varnothing of the flange [mm]
TAA 200	TAAC 200	1,000	60	400	200	327
TAA 250	TAAC 250	1,000	60	450	250	327
TAA 315	TAAC 315	1,000	60	520	315	386
TAA 355	TAAC 355	1,000	60	560	355	426
TAA 400	TAAC 400	1,000	60	600	400	487
TAA 450	TAAC 450	1,000	60	650	450	537
TAA 500	TAAC 500	1,000	60	700	500	595
TAA 560	TAAC 560	1,000	60	760	560	655
TAA 630	TAAC 630	1,000	60	830	630	725
TAA 710	TAAC 710	1,200	60	910	710	806
TAA 800	TAAC 800	1,300	60	1,000	800	896
TAA 1000	TAAC 1000	1,500	60	1,200	1,000	1,105

Attenuation of TAA silencers



Attenuation of TAAC silencers



7¹

Attenuation in octave bands [dB]

Type	63	125	250	500	1000	2000	4000	8000
TAA 200	4	8	18	27	40	34	20	13
TAA 250	3	8	16	25	33	25	15	11
TAA 315	3	6	12	23	29	20	14	9
TAA 355	2	6	12	23	26	18	13	8
TAA 400	2	5	11	23	25	16	12	7
TAA 450	2	5	11	21	23	15	10	6
TAA 500	2	4	10	20	22	14	8	5
TAA 560	2	4	10	18	20	14	8	4
TAA 630	1	3	8	16	14	13	7	3
TAA 710	1	2	6	14	12	11	6	2
TAA 800	1	2	5	12	10	9	6	2
TAA 1000	0	0	1	4	5	4	1	0

Attenuation in octave bands [dB]

Type	63	125	250	500	1000	2000	4000	8000
TAAC 200	7	12	22	40	50	50	50	46
TAAC 250	5	10	17	30	47	50	50	36
TAAC 315	4	9	15	27	44	45	39	27
TAAC 355	4	8	14	26	43	42	34	24
TAAC 400	3	7	13	26	40	38	29	21
TAAC 450	3	7	12	24	39	35	26	18
TAAC 500	2	6	12	23	38	33	24	17
TAAC 560	2	6	11	22	36	31	21	15
TAAC 630	2	5	11	21	34	29	19	13
TAAC 710	2	5	10	20	33	27	17	12
TAAC 800	2	5	9	19	31	25	14	10
TAAC 1000	2	4	8	17	29	22	12	8