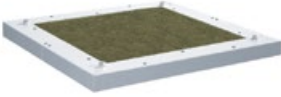


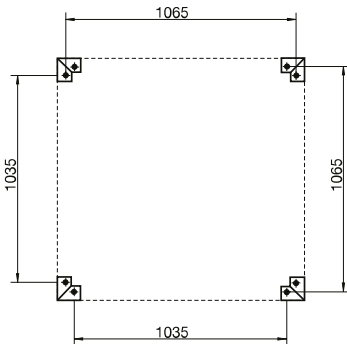
CAA – plate silencer



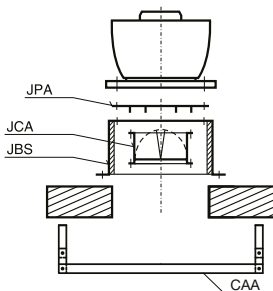
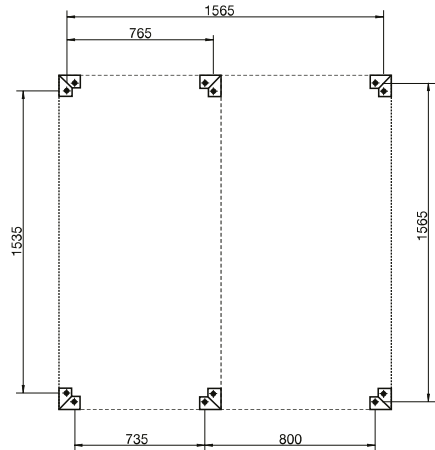
- it is mounted on the intake of axial or roof fans in an assembly with their components
- made of galvanized sheet metal, the damping layer of glass wool is 50 mm thick
- surface treatment with white lacquer is possible for an additional fee
- the silencer must be installed at the correct height (see table).

Type	Q_{max}	$\Delta p Q_{max}$	fastening	distance from suction	attenuation at frequencies [dB]					
	[m ³ /h]	[Pa]			[mm]	125	250	500	1,000	2,000
CAA 1100	600	10	Threaded rod	40	2	7	12	23	24	20
	2,100	20	Threaded rod	65	1	6	10	20	20	16
	4,500	40	Threaded rod	90	1	4	7	15	15	13
	7,000	65	Threaded rod	115	–	2	5	12	10	10
CAA 1600	7,000	60	Threaded rod	120	–	2	8	17	14	12
	16,000	60	Threaded rod	250	–	1	7	8	8	8
	20,000	60	Threaded rod	300	–	–	6	6	6	6

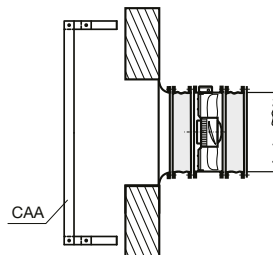
CAA 1100 (Ø1100)



CAA 1600 (Ø1600)



a simple example of mounting on a roof fan intake



a simple example of mounting on an axial fan intake