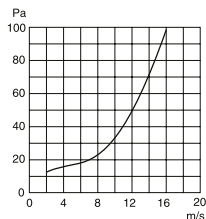
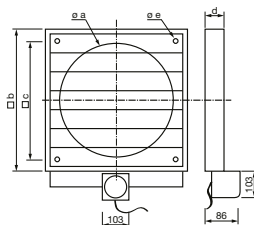


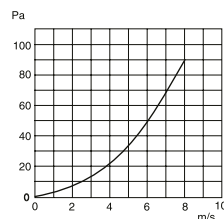
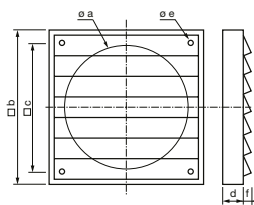
PAR – electrically operated blind flap



- plastic frame and flaps
- color gray RAL7035
- control servo motor 230V/50Hz, closed without voltage (using springs), permanently open under voltage
- the maximum speed for air supply is 3 m/s
- the maximum speed for air removal is 10 m/s
- newly also size 1000, dimensions on request
- on request PAR-E (economic version), opening time approx. 3 min.

Model	Ø a	b	c	d	Ø e	fan
PAR-160	160	194	140	22	5	150
PAR-200	210	244	182	21	5	200
PAR-250	260	294	232	26	5	250
PAR-315	314	346	276	26	5	315
PAR-355	360	397	310	26	5	355
PAR-400	420	462	366	26	5	400
PAR-450	460	501	395	31	5	450
PAR-500	510	548	443	31	5	500
PAR-560	560	605	522	31	5	560
PAR-630	630	696	626	31	5	630
PAR-710	710	760	692	40	5	710
PAR-800	800	840	772	40	5	800

PRG – rain blind



sizes 900 and 1000 on request

- plastic frame and slats
- color gray RAL7035
- the slats are solid
- maximum ambient temperature +70°C
- maximum speed of 12 m/s

Model	Ø a	b	c	d	Ø e	f	fan
PRG-160	152	178	130	20	4	30	150
PRG-200	210	245	190	20	5	30	200
PRG-250	260	299	235	25	5	45	250
PRG-315	310	347	274	26	5	44	315
PRG-355	360	397	310	26	5	44	355
PRG-400	423	460	364	26	5	39	400
PRG-450	460	501	395	31	5	39	450
PRG-500	510	549	445	31	5	64	500
PRG-560	575	610	530	30	5	50	560
PRG-630	660	701	626	31	5	54	630
PRG-710	710	749	663	31	5	59	710
PRG-800	–	830	760	40	5	50	800