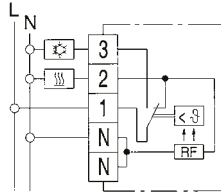


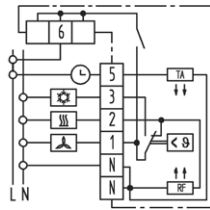
Spatial thermostats

RTR 6721 – room thermostat



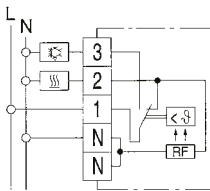
- wall mounting
- bimetal contact for temperature control
- temperature range from +5 °C to +30 °C
- sensitivity 0.5 °C
- IP30 protection
- max. load 230 V 10 A, 3 A inductive
- dimensions 75 × 75 × 25.5 mm (W × H × D)

RTR 6763 – room thermostat



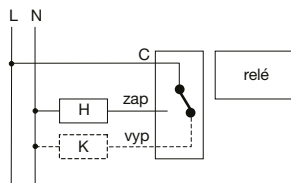
- thermostat with switch
- wall mounting
- bimetal contact for temperature control
- temperature range from +5 °C to +30 °C
- sensitivity 0.5 °C
- IP30 protection
- max. load 230 V 10 A, 3 A inductive
- dimensions 75 × 75 × 25.5 mm (W × H × D)

RTR 6705 – room thermostat



- wall mounting
- bimetal contact for temperature control
- temperature range from +5 °C to +60 °C
- sensitivity 0.5 °C
- IP30 protection
- max. load 230 V 10 A, 3 A inductive
- dimensions 75 × 75 × 25.5 mm (W × H × D)

RTR E200 – room programmable thermostat



H – heating, drives „NC“
K – heating, drives „NO“ or cooling only

- wall mounting
- clear LCD display
- 2 × 1.5 V batteries (AA), lifetime approx. 3 years
- output – relay, 1 switching contact, 24 ... 230 V
- switching current max. 8 A (2 A inductive)
- protection IP30
- proportional controller
- dimensions 140 × 94 × 26 mm (W × H × D)
- automatic clock setting
- automatic change of summer/winter time
- 3 preset programs
- button access lock