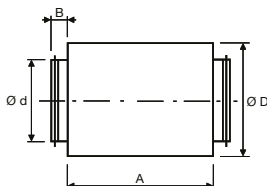


# Noise suppressors

## MAA – silencer for circular pipes

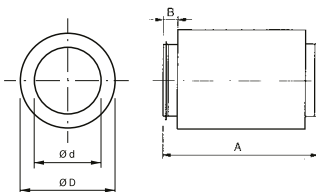


- the outer shell is made of galvanized sheet
- the inner casing is made of perforated sheet metal
- space between the shells filled with mineral wool, non-woven fabric on the inside
- enables significant noise attenuation to be achieved
- it can be installed very simply
- it is possible to connect several silencers together to achieve good noise suppression
- good results are achieved in conjunction with MIXVENT-TD fans
- the pressure loss of the silencer is considered to be 2 times the pressure loss of the smooth pipe
- larger and atypical diameters must be discussed with the manufacturer

Type	A [mm]	Ø d [mm]	Ø D [mm]	B [mm]	weight [kg]	attenuation dB in frequency band [Hz]						
						125	250	500	1,000	2,000	4,000	8,000
MAA 100	600	98	200	60	3	3	10	19	24	26	20	3
MAA 100	900	98	200	60	5	2	15	30	29	29	20	7
MAA 125	600	123	224	60	4	2	9	15	21	24	18	9
MAA 125	900	123	224	60	5	2	12	22	25	27	21	8
MAA 150	900	148	250	60	6	2	11	20	26	29	22	5
MAA 160	600	158	260	60	4	3	7	10	16	19	16	3
MAA 160	900	158	260	60	6	2	10	18	28	31	22	3
MAA 200	600	198	315	60	5	3	6	11	17	15	12	8
MAA 200	900	198	315	60	8	4	9	16	23	28	19	10
MAA 250	600	248	355	60	6	1	6	11	14	13	11	9
MAA 250	900	248	355	60	9	2	6	15	24	22	16	13
MAA 315	600	313	450	60	8	2	5	12	8	10	10	9
MAA 315	900	313	450	60	12	2	6	15	18	16	12	11
MAA 355	900	353	490	60	15	3	7	13	17	15	12	10
MAA 400	900	398	630	60	17	3	9	11	15	13	11	10
MAA 450	900	448	650	60	19	3	8	12	13	10	9	8
MAA 500	900	498	700	60	21	3	7	13	13	11	9	8

## MTS – silencer for circular pipes

7<sup>1</sup>



- the silencer casing is made of Al flexible hose
- the inner part is made of perforated Al hose
- enables significant noise attenuation to be achieved
- it can be installed very simply
- it is possible to connect several silencers together to achieve extremely good noise suppression
- good results are achieved in conjunction with MIXVENT-TD fans
- the pressure loss of the silencer is considered to be 4 times the pressure loss of the smooth pipe
- larger diameters must be discussed

Type	A [mm]	B [mm]	Ø d [mm]	Ø D [mm]	weight [kg]	dB attenuation in frequency band [Hz]				
						250 Hz	500 Hz	1,000 Hz	2,000 Hz	middle
MTS-080	1,000	65	80	140	1.0	-	-	-	-	-
MTS-100	1,000	65	100	160	1.2	7	17	34	60	15
MTS-125	1,000	65	125	190	1.6	6	15	30	48	13
MTS-160	1,000	65	160	212	2.2	4	12	26	33	9
MTS-200	1,000	65	200	263	2.7	3	9	24	24	8
MTS-250	1,000	65	250	312	3.4	3	8	20	17	7
MTS-315	1,000	65	315	368	4.4	2	6	16	12	5