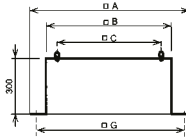


Mounting bases

JBS BR – mounting base

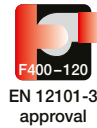
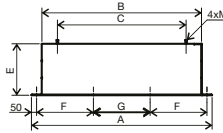
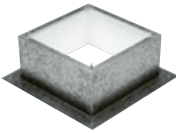


from size 905 the height is 400mm, other heights on request

- mounting base for CTH and CTV fire-fighting roof fans
- made of galvanized sheet steel
- certified in the Czech Republic, fitted with insulation

JBS	□ A	□ B	□ C	□ G
300	470	289	245	380
435	600	419	330	510
560	725	544	450	635
630	795	614	535	705
710	875	694	590	785
905	1,065	884	750	975
1,100	1,260	1,079	840	1,170
1,250	1,410	1,230	950	1,320

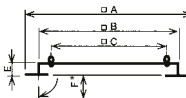
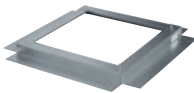
JBS-V BR – mounting base



- mounting base for fans
- inside it is fitted with insulation against condensation 4xM
- for HGTT, HGHT and CTVT-HP fans (sizes 712-801)

Type	A	B	C	E	F	G	M
JBS-V 800 BR	1,279	1,079	840	300	393	393	M12
JBS-V 900 BR	1,430	1,230	950	400	443	444	M12
JBS-V 1000 BR	1,447	1,247	950	400	449	449	M12
JBS-V 1250 BR	1,755	1,555	1,250	500	552	551	M16

JMS BR – mounting frame



* flexible anchoring plate see JMS

- mounting frame for CTH and CTV fire-fighting roof fans
- made of galvanized sheet steel
- certified in the Czech Republic

JMS	□ A	□ B	□ C	□ E	□ F
300	470	290	245	50	70
435	600	420	330	50	70
560	725	545	450	50	70
630	795	615	535	50	70
710	875	695	590	50	70
905	1,065	885	750	60	70
1100	1,260	1,080	840	60	70
1250	1,410	1,230	950	60	70